



## M-Prince Tag

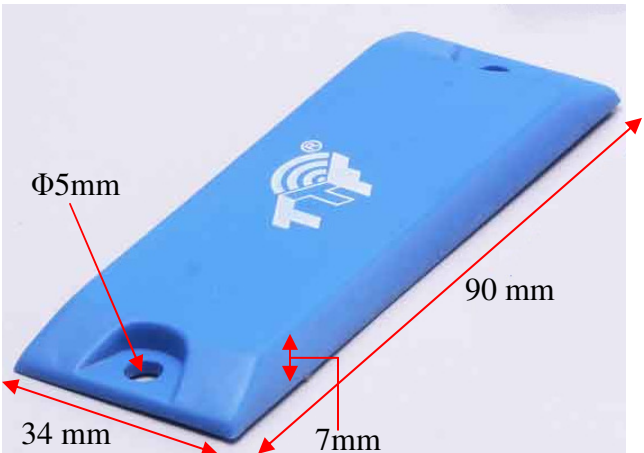
### FEATURES

- M-Prince Tag is ATEX approved and thus can be used in potentially explosive atmosphere.
- Operates effectively with a very good read range, especially when attached to metal.
- Rugged construction for high durability
- Can be attached by screws with the help of two holes.
- Can also be provided with Adhesive tape for easy attachment.
- Flexible Read/Write Range (reader dependant).

### APPLICATIONS

- Used in asset tracking applications such as Equipment, Parts, Containers, railway and warehousing solutions.
- Factory automation, Automotive & Security purpose.

|                            |   |  |
|----------------------------|---|--|
| <b>Chip Type:</b>          | <b>Alien Higgs 3 EPC Class 1 Gen 2</b>                  |  |
|                            | EPC 96 bit extendable upto 480 bits                     |  |
|                            | User Memory 512 bit                                     |  |
|                            | Data retention of 10 years                              |  |
|                            | Write endurance 100.000 cycles                          |  |
| <b>Mechanical:</b>         | Dimension   | 90 x 34 x 7mm                                      |
|                            | Material  | ABS  |
|                            | Colour  | Blue   |
|                            | Weight  | 19.3 g   |
| <b>Electrical:</b>         | Operating Frequency                                     | 865-868MHz, (902-928MHz also available on request) |
|                            | Operating mode  | Passive (battery-less transponder)                 |
| <b>Ingress Protection:</b> | IP68  |  |
| <b>Thermal:</b>            | Storage Temp.   | -20° C to +85° C                                   |
|                            | Operating Temp.   | -20° C to +70° C                                   |
| <b>Part Number:</b>        | 316V1-Ex  |  |
| <b>Options:</b>            | Available with:   |  |
|                            | Other IC type and Frequency on request                  |  |
|                            | Other plastic material and colours                      |  |
|                            | Adhesive backing for easy mounting (indoor application) |  |
|                            | Available for non-metallic application                  |  |



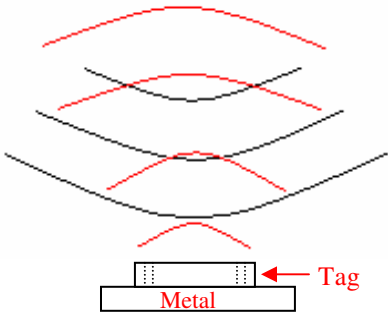
Tag Placement

- ✚ M-Prince is polarized perpendicular to TTF logo.
- ✚ Place the tag in such a way that most of its bottom area comes in direct contact with metal.
- ✚ Ensure that there is no hindrance between the tag and the reader antenna.
- ✚ Reader antenna should be parallel to the tag length as shown in below figure:

Correct way



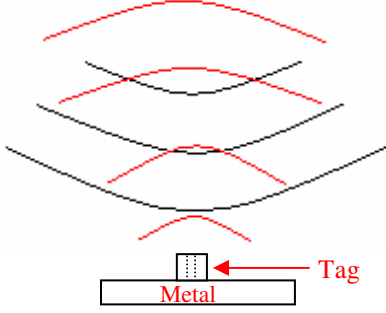
Antenna



Wrong way

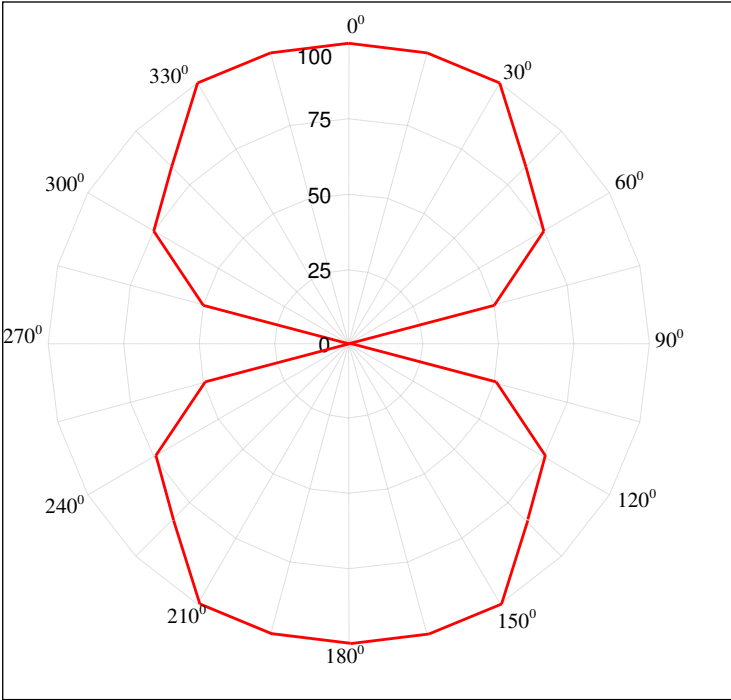


Antenna



- ✚ Tag can be attached either through screw M5/ Rivets / Adhesive tape.
- ✚ The distance between the hole to hole is 80mm

### M-Prince Tag Angular Sensitivity (Relative Read Range vs. Orientation)



Read range (in percent) at various angle.

